



Vortex Mixers



Mini Vortex Mixers
Heavy-Duty Vortex Mixers
Microplate Vortex Mixers
Multi-Tube Vortex Mixers



Ingeniously Practical

Mini Vortex Mixers



Four Mini Vortex Mixer models for gentle to high-speed mixing are available. Analog model offers variable speed control, and digital model allows input of the exact speed and time to achieve reproducible results. Pulsing model features a unique pulse action that reduces heat generation, while providing more effective mixing and cell disruption. Fixed speed model offers one-touch, high-speed mixing.

- Select from Two Modes of Operation—Touch or Continuous
- Variable Speed Models Offer Low RPM Start Up to High-Speed Mixing
- Fixed Speed Models Provide Full RPM for Vigorous Mixing



Mini Vortex Mixers

- Sturdy design
- Fixed high speed mixing
- Touch mode operation

Built sturdy to provide stable and reliable vortexing action. Starts mixing when the cup head is pressed down. Speed is fixed at full rpm to provide vigorous vortexing of samples.

Operating Conditions:

Unit can be run in conditions from 4 to 40°C (39 to 104°F), 20% to 85% relative humidity, non-condensing.

Ordering Information:

Units include a 3-wire cord and plug. Includes both cup head and 3" head with cover.

This product includes:

Description	Item Number
Cup Head	30400235
3" (7.6 cm) Head	30400236
3" (7.6 cm) Rubber Head Cover	30400237



Description	Model	Item Number
Fixed Speed Vortex Mixer	VXMNFS	30392108



Specifications	
Speed Range 120V	3200 rpm
Orbit	4.9 mm (0.19")
Controls	None
Duty Rating	Intermittent duty
Dimensions (L x W x H)	8.3" x 4.8" x 6.5" (21.1 x 12.2 x 16.5 cm)
Ship Weight	10 lbs (4.5 kg)

- Sturdy design
- Variable, analog speed control
- Continuous or touch mode operation

Built sturdy to provide stable and reliable vortexing action. Control allows low rpm startup for gentle shaking or high speed mixing for vigorous vortexing of samples. Two modes of operation; continuous mode when using accessory attachments or touch mode which activates mixing when depressing the cup head.

Operating Conditions:

Unit can be run in conditions from 4 to 40°C (39 to 104°F), 20% to 85% relative humidity, non-condensing.

Ordering Information:

Units include a 3-wire cord and plug. Includes both cup head and 3" head with cover. Additional accessories can be found on pages 52-53.

This product includes:

Description	Item Number
Cup Head	30400235
3" (7.6 cm) Head	30400236
3" (7.6 cm) Rubber Head Cover	30400237



Description	Model	Item Number
Analog Vortex Mixer	VXMNAL	30392115



Specifications	
Speed Range* 120V	300 to 3200 rpm
Orbit	4.9 mm (0.19")
Controls	Auto/Off/On Rocker Switch, Speed Knob: Variable 1 to 10 Dial Marks
Duty Rating	Intermittent duty
Dimensions (L x W x H)	8.3" x 4.8" x 6.5" (21.1 x 12.2 x 16.5 cm)
Ship Weight	10 lbs (4.5 kg)

* Maximum speed will vary depending on accessory used.

Vortex Mixers

Mini Vortex Mixers

- Sturdy design
- LED displays for speed and time
- Continuous or touch mode operation

Built sturdy to provide stable and reliable vortexing action. Ideal for applications that demand repeatable results. Microprocessor control maintains set speed for strong, consistent mixing action. Timer will display elapsed time or, when programmed to user defined time limit, the unit will shut off when time reaches zero. Two modes of operation; continuous mode when using accessory attachments or touch mode which activates mixing when depressing the cup head.

Operating Conditions:

Unit can be run in conditions from 4 to 40°C (39 to 104°F), 20% to 85% relative humidity, non-condensing.

Ordering Information:

Units include a 3-wire cord and plug. Includes both cup head and 3" head with cover. Additional accessories can be found on pages 52-53.

This product includes:

Description	Item Number
Cup Head	30400235
3" (7.6 cm) Head	30400236
3" (7.6 cm) Rubber Head Cover	30400237



Description	Model	Item Number
Digital Vortex Mixer	VXMNDG	30392122



Specifications	
Speed Range* 120V	500 to 3000 rpm
Timer	1 second to 160 hours
Orbit	4.9 mm (0.19")
Controls	Auto/Standby/On Rocker Switch, LED Displays for Speed/Time, Up/Down Buttons for Set-Point Control
Duty Rating	Intermittent duty
Dimensions (L x W x H)	8.3" x 4.8" x 6.5" (21.1 x 12.2 x 16.5 cm)
Ship Weight	10 lbs (4.5 kg)

* Maximum speed will vary depending on accessory used.

- Sturdy design
- LED displays for time and speed
- Glass bead cell disruption/homogenization

Built sturdy to provide stable and reliable vortexing action. Powerful pulsing vortex action produces excellent cell disruption for glass bead procedures. Capable of complete cell disruption of samples in only minutes. Unique pulsing action reduces heat generation while providing more effective mixing and disruption. Displayed time counts up during continuous operation and counts down during timed runs.

Operating Conditions:

Unit can be run in conditions from 4 to 40°C (39 to 104°F), 20% to 85% relative humidity, non-condensing.

Ordering Information:

Units include a 3-wire cord and plug. Includes cup head, 3" head with cover, and an easy-to-load 1.5 mL to 2 mL Micro-Tube Holder. Holder has a built-in cup head. Additional accessories can be found on pages 52-53.

This product includes:

Description	Item Number
Cup Head	30400235
3" (7.6 cm) Head	30400236
3" (7.6 cm) Rubber Head Cover	30400237
Stainless Steel Tube Holder	30400206



Description	Model	Item Number
Pulsing Vortex Mixer	VXMNPS	30392129



Specifications	
Speed Range* 120V	500 to 3000 rpm
Timer	1 second to 160 hours
Orbit	2.5 mm (0.098")
Controls	Auto/Standby/On Rocker Switch, LED Displays for Speed/Time, Up/Down Buttons for Set-Point Control Pulse Button
Duty Rating	Intermittent duty
Dimensions (L x W x H)	8.3" x 4.8" x 6.5" (21.1 x 12.2 x 16.5 cm)
Ship Weight	10 lbs (4.5 kg)

* Maximum speed will vary depending on accessory used.

Mini Vortex Mixer Accessories

Micro-Tube Holder

Mixes (48) 0.25 to 2 mL micro-tubes.
Requires Insert Retainer.

Description	Item Number
Micro-Tube Holder (2 pack)	30400232
Insert Retainer	30400227



9 to 13 mm Tube Holder

Ideal for mixing 5 mL culture tubes and micro-vials.
Requires Insert Retainer.

Description	Item Number
9 to 13 mm Tube Holder (2 pack)	30400229
Insert Retainer	30400227



14 to 19 mm Tube Holder

Ideal for mixing up to (8) 15 mL centrifuge tubes.
Requires Insert Retainer.

Description	Item Number
14 to 19 mm Tube Holder (2 pack)	30400230
Insert Retainer	30400227



20 to 25 mm Tube Holder

Ideal for mixing up to (8) 50 mL centrifuge tubes.
Requires Insert Retainer

Description	Item Number
20 to 25 mm Tube Holder (2 pack)	30400231
Insert Retainer	30400227



Vessel Harness

Mixes Erlenmeyer flasks and media bottles.
Requires Insert Retainer.

Description	Item Number
Vessel Harness (2 pack)	30400228
Insert Retainer	30400227



Cup Head

Designed for mixing 1 tube at a time.

Description	Item Number
Cup Head	30400235



3" Rubber Head Cover and 3" Head

Designed for mixing irregular shaped objects.

Description	Item Number
3" (7.6 cm) Rubber Head Cover	30400196
3" (7.6 cm) Head	30400236
3" (7.6 cm) Head with Rubber Cover	30400237



Microplate Holder

Ideal for mixing 96-well plates or deep well blocks.
Requires Insert Retainer.

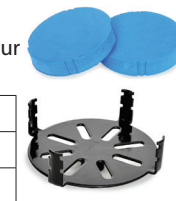
Description	Item Number
Microplate Holder (2 pack)	30400233
Insert Retainer	30400227



Flat Foam Insert

Ideal for custom applications. Can be cut or drilled to fit your specifications. Requires Insert Retainer.

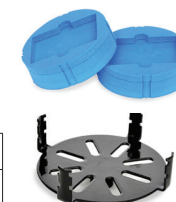
Description	Item Number
Flat Foam Insert (2 pack)	30400234
Insert Retainer	30400227



Microwell Kit with Retainer

Includes:
• 2 Microplate Holders
• 1 Insert Retainer

Description	Item Number
Microwell Kit with Retainer	30400199



Microtube Kit with /Retainer

Includes:
• 2 Micro-Tube Holders
• 1 Insert Retainer

Description	Item Number
Microtube Kit with /Retainer	30400200



Foam Insert Variety Pack

Includes:
• (1) 9 to 13 mm Tube Holder
• (1) 14 to 19 mm Tube Holder
• (1) 20 to 25 mm Tube Holder
• 1 Flat Foam Insert

Description	Item Number
Foam Insert Variety Pack	30400201



Micro-Tube and Microplate Holder Kit

Includes:
• 1 Micro-Tube Holder
• 1 Microplate Holder
• 1 Insert Retainer

Description	Item Number
Micro-Tube & Microplate Holder Kit	30400198



Tube Holder Kit

Includes:
• (1) 9 to 13 mm Tube Holder
• (1) 14 to 19 mm Tube Holder
• (1) 20 to 25 mm Tube Holder
• 1 Flat Foam Insert
• 2 Vessel Harnesses
• 1 Insert Retainer

Description	Item Number
Tube Holder Kit	30400197



OHAUS Vortex Mixer accessories are interchangeable with other manufacturers' models. Call 1-800-672-7722 for assistance.

Accessories

Mini Vortex Mixer Accessories

Single Tube Holder

Single tube, hands free mixing. Easily attaches to the top of any Vortex Mixer with the use of a strong magnetic base. Accepts tubes from 2.5 to 4.5" (6.4 to 11.4 cm) in length. Minimum tube diameter of 0.75" (19 mm).

Description	Item Number
Single Tube Holder	30400202



Adapter for Vortex-Genie® Mixer*

Adapter plate easily adheres to the Vortex-Genie® Mixer housing so Single Tube Holder (sold separately) can be attached.



Description	Item Number
Adapter plate	30400203

* The Vortex-Genie® Mixer is a registered trademark of Scientific Industries, Inc.

Single Tube Holder Accessories

(Requires Single Tube Holder)

0.5 mL Micro-Tube Holder

Mixes (24) 0.5 mL micro-tubes.
For use with Single Tube Holder.

Description	Item Number
Micro-Tube Holder (0.5 mL)	30400204



1.5 mL to 2.0 mL Micro-Tube Holder

Mixes (18) 1.5 to 2 mL micro-tubes.
For use with Single Tube Holder.

Description	Item Number
Microtube Holder (1.5 mL to 2.0 mL)	30400205



Ampule Tube Holder

Mixes up to 4 storage vials and test tubes.

Description	Item Number
15 to 17 mm Ampule Tube Holder	30400207
10 to 17 mm Ampule Tube Holder	30400208



Stainless Steel Microtube Holder

Mixes up to (12) 1.5 to 5 mL tubes.
Stainless steel construction.

Description	Item Number
Microtube Holder	30400206



Heavy-Duty Vortex Mixers



Heavy-Duty Vortex Mixers feature a heavy-duty design and efficient motor to permit continuous duty operation, and the ability to handle accessory components over the entire speed range. Analog variable speed models or microprocessor-controlled digital models offer exact speed control when applications demand repeatable results. A wide range of accessories are available for microtubes, microplates and a variety of tube sizes from 0.5 to 50 ml.

- Accessory Adapter's Unique Mode of Attachment Allows for Secure Mixing
- Touchpad Control & Independent LED Displays for Speed/Time on Digital Models
- Variable Speed Analog Model Offers an Economical Alternative to Digital Model

Vortex Mixers

Heavy-Duty Vortex Mixers

- Designed for continuous duty
- LED displays for speed and time
- Includes foam insert for 1.5 mL to 2.0 mL microtubes

The OHAUS Digital Heavy-Duty Vortex Mixer is ideal for applications that demand repeatable results. Mixer features touchpad controls and LED displays for accurate speed (rpm) and time (minutes and seconds) results. The heavy-duty design and efficient motor allow this mixer to operate in continuous duty and handle all accessories over the entire speed range. Choose from two modes of operation: "Touch" mode for mixing tubes when cup head or Universal Holder with cover is depressed, or "On" mode when using any of the accessory attachments for continuous operation. Microprocessor control maintains set speed for strong, consistent mixing action. Timer will display elapsed time or, when programmed to user defined time limits, the unit will shut off when time reaches zero.

Operating Features:

Microprocessor Control: The variable speed microprocessor control provides consistent uniform mixing action.

LED Display: Touch pad controls with easy-to-read, independent LED displays for speed and time allow operator to view both settings at once. Provides repeatable and accurate results every time and is easily visible across lab benches. Timer will display elapsed time or, when programmed to user defined limit, will shut off unit when time reaches zero. Display will show last used settings, even after power has been turned off.

Operating Conditions:

Unit can be run in conditions from 4 to 40°C (39 to 104°F), 20% to 85% relative humidity, non-condensing.

Ordering Information:

Mixer includes a cup head, universal holder with cover, foam microtube insert for (38) 1.5 to 2.0 mL microtubes, and a detachable, 3-wire cord and specified plug. Additional accessories can be found on page 60.

This product includes:

Description	Item Number
Cup Head	30400210
Universal Holder	30400226
Universal Holder Cover	30400225
Foam Insert (1.5 to 2.0 microtubes)	30400217



Specifications	
Speed Range	On Mode 300 to 2500 rpm Touch Mode 300 to 3500 rpm
Timer	1 second to 160 hours
Orbit	4.9 mm (0.19")
Controls	Touch/Standby/On Rocker Switch, LED Displays for Speed/Time, Up/Down Buttons for Set-Point Control
Capacity	2.5 lbs (1.1 kg)
Duty Rating	Continuous duty
Dimensions (L x W x H)	9.5 x 6.6 x 6.3" (24.1 x 16.8 x 16 cm)
Ship Weight	15 lbs (6.8 kg)

Description	Model	Item Number
Digital Heavy Duty Vortex Mixer	VXHDDG	30392146

Heavy-Duty Vortex Mixers

- Designed for continuous duty
- Includes foam insert for 1.5 mL to 2.0 mL microtubes
- Heavy-duty design

The OHAUS Analog Heavy-Duty Vortex Mixer is a variable speed analog mixer that is designed for continuous duty. The heavy-duty design and efficient motor allow this mixer to operate in continuous duty and handle all accessories over the entire speed range. Choose from two modes of operation: "Touch" mode for mixing tubes when cup head or Universal Holder with cover is depressed, or "On" mode when using any of the accessory attachments for continuous operation.

Operating Conditions:

Unit can be run in conditions from 4 to 40°C (39 to 104°F), 20% to 85% relative humidity, non-condensing.

Ordering Information:

Mixer includes a cup head, universal holder with cover, foam microtube insert for (38) 1.5 to 2.0 mL microtubes, and a detachable, 3-wire cord and specified plug. Additional accessories can be found on page 60.



This product includes:

Description	Item Number
Cup Head	30400210
Universal Holder	30400226
Universal Holder Cover	30400225
Foam Insert (1.5 to 2.0 microtubes)	30400217



Specifications		
Speed Range	On Mode Touch Mode	300 to 2500 rpm 300 to 3500 rpm
Orbit		4.9 mm (0.19")
Controls		Analog
Capacity		2.5 lbs (1.1 kg)
Duty Rating		Continuous duty
Dimensions (L x W x H)		9.5 x 6.6 x 6.3" (24.1 x 16.8 x 16 cm)
Ship Weight		15 lbs (6.8 kg)

Description	Model	Item Number
Analog Heavy Duty Vortex Mixer	VXHDAL	30392148

Microplate Vortex Mixers



Microplate Vortex Mixers are designed specifically for continuous duty throughout the speed range. Analog variable speed models or microprocessor-controlled digital models offer exact speed control for applications that demand repeatable results. The high-speed and small orbit of these mixers make them optimal for effectively mixing microplates. Cup head for mixing single tubes is also included.

- Microplate Adapter's Unique Mode of Attachment Allows for Secure Mixing
- Touchpad Control & Independent LED Displays for Speed/Time on Digital Models
- Variable Speed Analog Model Offers an Economical Alternative to Digital Model



Microplate Vortex Mixers

- Designed for continuous duty
- Designed for shaking microplates or tubes
- LED displays for speed and time

The OHAUS Digital Microplate Vortex Mixer is ideal for applications that demand repeatable results. Mixer features touchpad controls and LED displays for accurate speed (rpm) and time (minutes and seconds) results. Microprocessor control maintains set speed for strong, consistent mixing action. Timer will display elapsed time or, when programmed to a user defined time limit, the unit will shut off when time reaches zero. Choose from two modes of operation: "Touch" mode which activates mixing when cup head is depressed, or "On" mode when using the microplate attachments for continuous operation.

Operating Features:

Microprocessor Control: The variable speed microprocessor control provides consistent uniform mixing action.

LED Display: Touch pad controls with easy-to-read, independent LED displays for speed and time allow operator to view both settings at once. Provides repeatable and accurate results every time and is easily visible across lab benches. Timer will display elapsed time or, when programmed to user defined limit, will shut off unit when time reaches zero. Display will show last used settings, even after power has been turned off.

Operating Conditions:

Unit can be run in conditions from 4 to 40°C (39 to 104°F), 20% to 85% relative humidity, non-condensing.

Ordering Information:

Mixer includes a cup head, single microplate holder, and a detachable, 3-wire cord and specified plug. Accessories that can be used on the Microplate Vortex Mixer are cup head, single microplate holder and double microplate holder. Additional accessories can be found on page 60.

This product includes:

Description	Item Number
Cup Head	30400210
Microplate Holder (Single)	30400215



Specifications	
Speed Range	300 to 2500 rpm On Mode 300 to 3500 rpm Touch Mode
Timer	1 second to 160 hours
Orbit	3.5 mm (0.13")
Controls	Touch/Standby/On Rocker Switch, LED Displays for Speed/Time, Up/Down Buttons for Set-Point Control
Capacity	2 microplates
Duty Rating	Continuous duty
Dimensions (L x W x H)	10.5 x 5.4 x 4.5" (26.7 x 13.7 x 11.4 cm)
Ship Weight	12 lbs (5.4 kg)

Description	Model	Item Number
Digital Microplate Vortex Mixer	VXMPDG	30392160

Vortex Mixers

Microplate Vortex Mixers

- Designed for continuous duty
- Designed for shaking microplates or tubes
- Optional double microplate holder available

The OHAUS Analog Microplate Vortex Mixer is a variable speed analog mixer that is designed for continuous duty. The high speed and small orbit is optimal for effectively mixing microplates. Choose from two modes of operation: "Touch" mode which activates mixing when cup head is depressed, or "On" mode when using the microplate attachments for continuous operation.

Operating Conditions:

Unit can be run in conditions from 4 to 40°C (39 to 104°F), 20% to 85% relative humidity, non-condensing.

Ordering Information:

Mixer includes a cup head, single microplate holder, and a detachable, 3-wire cord and specified plug. Accessories that can be used on the Microplate Vortex Mixer are cup head, single microplate holder and double microplate holder. Additional accessories can be found on page 60.

This product includes:

Description	Item Number
Cup Head	30400210
Microplate Holder (Single)	30400215



Specifications		
Speed Range	On Mode Touch Mode	300 to 2500 rpm 300 to 3500 rpm
Orbit		3.5 mm (0.13")
Controls		Analog
Capacity		2 microplates
Duty Rating		Continuous duty
Dimensions L x W x H		10.5 x 5.4 x 4.5" (26.7 x 13.7 x 11.4 cm)
Ship Weight		12 lbs (5.4 kg)

Description	Model	Item Number
Analog Microplate Vortex Mixer	VXMPAL	30392162

Microplate Vortex Mixer Accessories

Foam Insert for 0.5 mL Microtubes

Foam insert holds (52) 0.5 mL microtubes.
Requires Universal Holder.

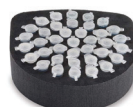
Description	Item Number
0.5 mL microtubes	30400216
Universal Holder	30400226



Foam Insert for 1.5 to 2.0 mL Microtubes

Foam insert holds (38) 1.5 to 2.0 mL microtubes.
Requires Universal Holder.

Description	Item Number
1.5 to 2.0 mL microtubes	30400217
Universal Holder	30400226



Foam Insert for 12-13 mm Test Tubes

Foam insert holds (34) 12-13 mm diameter test tubes.
Requires Universal Holder.

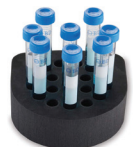
Description	Item Number
12-13 mm test tubes	30400220
Universal Holder	30400226



Foam Insert for 15-18 mm Test Tubes

Foam insert holds (20) 15-18 mm diameter test tubes.
Ideal for 15 mL centrifuge tubes.
Requires Universal Holder.

Description	Item Number
15-18 mm test tubes	30400221
Universal Holder	30400226



Foam Insert for 19-21 mm Test Tubes

Foam insert holds (18) 19-21 mm diameter test tubes.
Requires Universal Holder.

Description	Item Number
19-21 mm test tubes	30400222
Universal Holder	30400226



Foam Insert for 22-25 mm Test Tubes

Foam insert holds (13) 22-25 mm diameter test tubes.
Requires Universal Holder.

Description	Item Number
22-25 mm test tubes	30400223
Universal Holder	30400226



Foam Insert for 26-29 mm Test Tubes

Foam insert holds (4) 26-29 mm diameter test tubes. Ideal for 50 mL centrifuge tubes. Requires Universal Holder.

Description	Item Number
26-29 mm test tubes	30400224
Universal Holder	30400226



Single Tube Holder

Single tube, hands free mixing designed to fit on the Heavy-Duty Vortex Mixer. Easily attached to the top of mixer and is magnetically secured. Accepts tubes from 2.5 to 4.5" (6.4-11.4 cm). Minimum tube diameter is 0.75" (19 mm)

Description	Item Number
Single Holder	30400219



Cup Head*

Designed for mixing 1 tube at a time.

Description	Item Number
Cup Head	30400210



Small Vessel Holder

Rubber holder secures 125 and 250 mL Erlenmeyer flasks. Vessel holder also includes a grip mat. Requires Universal Holder.

Description	Item Number
Small Vessel Holder	30400218
Universal Holder	30400226



Large Vessel Holder

Rubber holder secures 500 and 1000 mL Erlenmeyer flasks. Vessel holder also includes a grip mat. Requires Universal Holder.

Description	Item Number
Large Vessel Holder	30400211
Universal Holder	30400226



Microplate Holder (Single)*

Designed to hold one standard microplate.

Description	Item Number
Single Holder	30400215



Microplate Holder (Double)*

Designed to hold two standard microplates.

Description	Item Number
Double Holder	30400213



Microplate Holder (Quad)

Designed to hold four standard microplates.

Description	Item Number
Quad Holder	30400214



Stackable Microplate Holder Four

Designed to maximize the capacity of the Heavy-Duty Vortex Mixer to eight microplates by stacking the tray on top of the four plate holder.

Description	Item Number
Stackable Holder	30400212



Flat Foam Insert

Ideal for custom applications. Can be cut or drilled to fit your specifications. Requires Universal Holder.

Description	Item Number
Flat Foam Insert	30400209
Universal Holder	30400226



Universal Holder & Cover

Replacement for items supplied with Heavy-Duty Vortex Mixer. Cover allows for mixing irregularly shaped objects.

Description	Item Number
Universal Holder	30400226
Universal Holder Cover	30400225



Unless noted with an asterisk (), for use on Heavy-Duty Vortex only.

Multi-Tube Vortex Mixers



Multi-Tube Vortexers are ideal for high throughput sample processing. Interchangeable foam racks for vortexing tubes from 10 to 29 mm in diameter available. Vortexing action is created by securing the top of the sample in place while allowing the bottom to rotate freely in a 3.6 mm orbit. Suction cup feet reduce motion and prevent sliding on work surface. Analog & digital models, both microprocessor-controlled and run in continuous or timed mode.

- Digital Models Ideal for Applications that Require Accuracy and Repeatability
- Pulsing Mode on Digital Models to Enhance Vortexing Action
- Analog Model Offers an Economical Alternative When Exact Speed/Time Not Required

Multi-Tube Vortex Mixers

- Process up to 50 samples at a time
- Continuous or timed operation
- Includes foam rack for 12 mm tubes

Conveniently angled front panel features rocker switch for run, time and standby modes.

Operating Features:

One piece, stainless steel housing design optimizes clean-ups. Ideal for applications requiring accuracy and repeatability. The stainless steel one piece housing design is conducive to keeping your vortexer clean and free from contaminants.

Microprocessor Control: The variable speed microprocessor control provides consistent uniform mixing action.

Adjustment Knobs: Basic speed and time knobs with 1 to 10 dial markings.

Operating Conditions:

Unit can be run in conditions from 4 to 40°C (39 to 104°F), 20% to 85% relative humidity, non-condensing.

Applications:

Suspensions, high throughput testing in clinical, environmental, and chemistry labs.

Ordering Information:

Unit includes a detachable, 3-wire cord and plug. Unit is also supplied with a Tray Pad Set for support and one 12 mm Test Tube Foam Rack (30400239). Additional accessories can be found on page 64.



Specifications	
Speed Range*	1200 to 2400 rpm
Timer	0 to 60 seconds
Orbit	3.6 mm (0.14")
Maximum Weight Capacity	10 lbs (4.5 kg)
Duty Rating	Continuous duty
Tray Dimensions (L x W)	7.25 x 12.25" (18.4 x 31.1 cm)
Overall Dimensions (L x W x H)	9.5 x 15.1 x 16" (24.1 x 38.4 x 40.6 cm)
Ship Weight	42 lbs (19.1 kg)

* Maximum speed will vary depending on load.

Description	Model	Item Number
Analog Multi-Tube Vortexer	VXMTAL	30392164

Vortex Mixers

Multi-Tube Vortex Mixers

- Process up to 50 samples at a time
- LED displays for speed and time
- Pulsing mode

Ideal for applications requiring accuracy and repeatability.

Operating Features:

One piece, stainless steel housing design optimizes clean-ups. Ideal for applications requiring accuracy and repeatability. The stainless steel one piece housing design is conducive to keeping your vortexer clean and free from contaminants.

Microprocessor Control: The variable speed microprocessor control provides consistent uniform mixing action.

LED Display: Touch pad controls with easy-to-read, independent LED displays for speed and time allow operator to view both settings at once. Provides repeatable and accurate results every time and is easily visible across lab benches. Timer will display elapsed time or, when programmed to user defined limit, will shut off unit when time reaches zero. Display will show last used settings, even after power has been turned off.

Pulsing Mode: Programmable pulsing mode allows user to adjust the pulse-on and pulse-off times between 1 and 59 seconds in 1 second intervals. This feature enhances the vortex action by creating a more vigorous mix.

Operating Conditions:

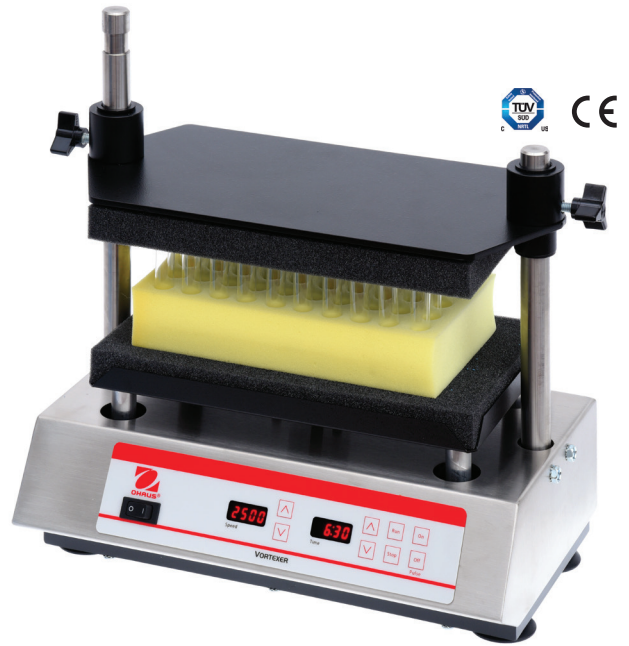
Unit can be run in conditions from 4 to 40°C (39 to 104°F), 20% to 85% relative humidity, non-condensing.

Applications:

Suspensions, high throughput testing in clinical, environmental, and chemistry labs.

Ordering Information:

Unit includes a detachable, 3-wire cord and plug. Unit is also supplied with a Tray Pad Set for support and one 12 mm Test Tube Foam Rack (30400239). Additional accessories can be found on page 64.



Specifications	
Speed Range*	500 to 2500 rpm
Speed Accuracy	± 25 rpm
Timer	1 second to 160 hours
Orbit	3.6 mm (0.14")
Maximum Weight Capacity	10 lbs (4.5 kg)
Duty Rating	Continuous duty
Tray Dimensions (L x W)	7.25 x 12.25" (18.4 x 31.1 cm)
Overall Dimensions (L x W x H)	9.5 x 15.1 x 16" (24.1 x 38.4 x 40.6 cm)
Ship Weight	42 lbs (19.1 kg)

* Maximum speed will vary depending on load.

Description	Model	Item Number
Digital Multi-Tube Vortexer	VXMTDG	30392171

Multi-Tube Vortexer Accessories

Foam Test Tube Racks

Description	Tube Capacity	Color	Dimensions (L x W x H)	Item Number
10 mm Test Tube Foam Rack	50	Gray	5.5 x 9.5 x 2" (14 x 24.1 x 5.1 cm)	30400238
12 mm Test Tube Foam Rack	50	Blue	5.5 x 9.5 x 2" (14 x 24.1 x 5.1 cm)	30400239
13 mm Test Tube Foam Rack	50	Yellow	5.5 x 9.5 x 2" (14 x 24.1 x 5.1 cm)	30400240
16 mm Test Tube Foam Rack (for 15 mL centrifuge tubes)	50	Green	5.5 x 9.5 x 2" (14 x 24.1 x 5.1 cm)	30400241
25 mm Test Tube Foam Rack	28	White	5.5 x 9.5 x 2" (14 x 24.1 x 5.1 cm)	30400243
29 mm Test Tube Foam Rack (for 50 mL centrifuge tubes)	15	Red	5.5 x 9.5 x 2" (14 x 24.1 x 5.1 cm)	30400242
Replacement Tray Pad Set (upper & lower)	N/A	Gray	7 x 12 x 1" (17.8 x 30.5 x 2.5 cm)	30400245



Post Extension Kit

Adds 6" (15.2 cm) to the post of the Multi-Tube Vortex Mixer to accommodate tubes up to 10" (25.4 cm) tall.

Description	Item Number
Post Extension Kit	30400244







OHAUS Corporation

Headquartered in Parsippany, NJ, OHAUS Corporation manufactures an extensive line of high-precision electronic and mechanical balances and scales that meet the weighing needs of virtually every industry. We are a global leader in the laboratory, industrial, and education channels as well as a host of specialty markets, including the food preparation, pharmacy and jewelry industries. An ISO 9001:2008 manufacturer, OHAUS products are precise, reliable and affordable, and are backed by industry-leading customer support. For additional information, contact OHAUS Corporation at 1.973.377.9000, or visit www.ohaus.com.

OHAUS CORPORATION
* 7 Campus Drive
Suite 310
Parsippany, NJ 07054 USA

Tel: 800.672.7722
973.377.9000
Fax: 973.944.7177

www.ohaus.com

*With offices throughout
Europe, Asia, and
Latin America*

***ISO 9001:2008**
Registered Quality
Management System

Ingeniously Practical